

## 46 Golden Grove, Rhyl

£209,950

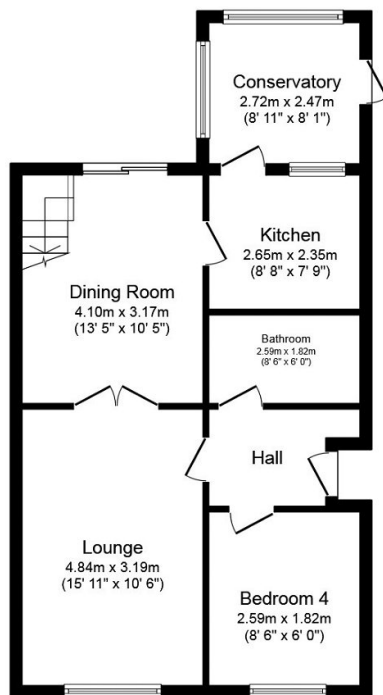
🛏 4 🚗 1 🛋 2



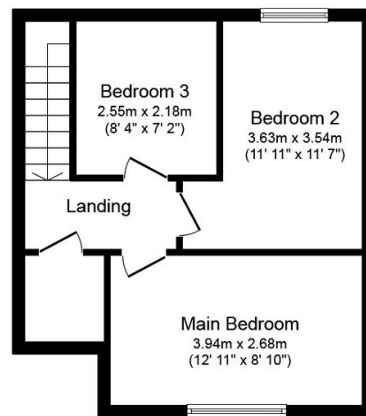
We are pleased to present this lovely semi-detached dormer bungalow in a convenient location. This well presented spacious home offers comfort and convenience for families. As you enter the property, you will be greeted by a spacious reception room through to dining room, perfect for relaxing and entertaining guests. There are four bedrooms of which three are doubles . The property boasts off street parking with a well maintained garden to the front and an easily maintainable enclosed rear garden. The location also offers several amenities such as public transport links, nearby schools, and nearby nature reserve, making it an ideal choice for families.

## Key Features

- Semi detached family home
- Four bedrooms including three doubles
- Off street parking
- EPC - D
- Freehold
- Close to local nature reserve
- Spacious lounge through dining room
- Enclosed sunny and secluded garden
- Council Tax - C
- Date 10/10/2023



**Ground Floor**



**First Floor**

Total floor area 97.4 m<sup>2</sup> (1,049 sq.ft.) approx

This plan is for illustration purposes only and may not be representative of the property. Plan not to scale. Powered by PropertyBox